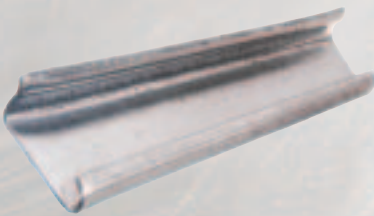
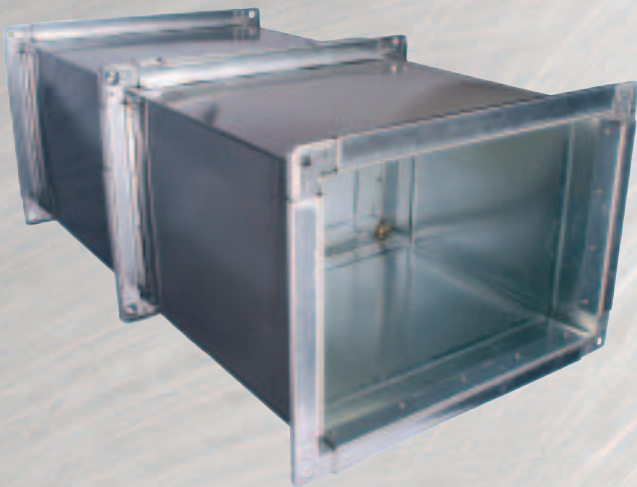


Four Bolt Duct Connection System**Hardcast Four Bolt Duct Connection System
Now Available**

Hardcast has launched a new hardware product line. The Four Bolt Duct Connection System is design to provide a simple and effective means of connecting rectangular duct sections together. This connection system consists of five basic components:

1) Flange

- Available in two sizes: "G" 7/8" or 1 3/8".
- Galvanized steel
- Hollow roll-formed section containing an integral sealant.
- The synthetic resin sealant has excellent adhesion to metal and is easy to work with
- Sealant is non-flow to 180°
- Sealant retains its sealing properties indefinitely

2) Corner

- Galvanized steel
- Flanged and Embossed to provide strength and rigidity
- Square bolt hole allows field assembly with a single wrench
- Prepunched to accomodate #10 sheet metal screws

3) Cleat

- Galvanized Steel
- Design to be used as a drive cleat or snap-on cleat

4) Gasket

- High density
- Self-adhering
- Choice of EPDM, Butyl or Neoprene

5) Bolts & Nuts

- Short neck carriage bolt
- Hex nuts
- Hot-dipped galvanized
- Available in two sizes: "G" 3/4"x3/16" or "J" 1"x3/8"

For more information on Hardcast Four Bolt Duct Connection System, call 800-527-7092 or visit www.hardcast.com.